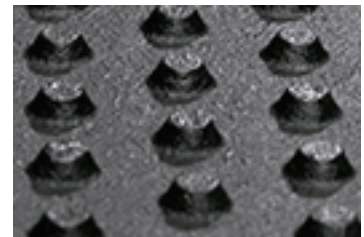
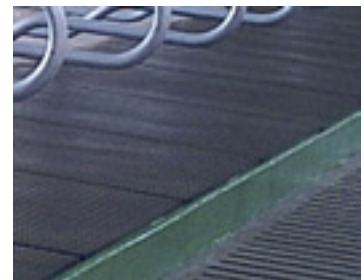




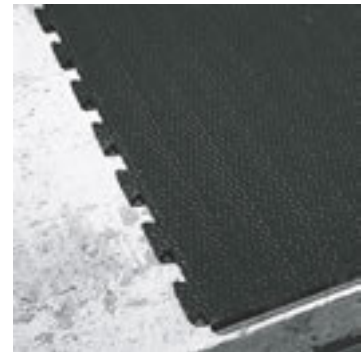
Your KRAIBURG dealer:



lower side



with straight edges



with puzzle shaped edges

- lower side with simple studs gives softness
- rugged, dimensionally stable and durable
- can be variably adjusted in length and width if required

**Dimensions:**

**thickness:** 20 mm

**KEN (straight edges) - width x length:**

- 90 cm x 130/140/150/165 cm
- 100 cm x 130/140/150/165/175/185/200/220/350 cm
- 110 cm x 140/150/165/175/185/200/220/350 cm
- 120 cm x 150/165/170/175/180/185/200/220/350 cm
- 130 cm x 150/165/175/185/200/220/350 cm

**KEN Puzzle - width x length:**

- 105 cm x 140/150/165/175/185 cm
- 115 cm x 140/150/165/175/185/200 cm
- 125 cm x 150/165/175/185/200 cm

**Installation:**

3 fixings / mat\*

\* Please take notice of the corresponding KRAIBURG specifications and installation instructions with useful advice and tips.

>The products presented here should only be used for the mentioned applications. Technical specifications are subject to alterations. All sales are subject to our General Terms and Conditions. Legal basis is the German version of the document.

**Tolerances:**

**thickness:**

+3/-2 mm

The tolerances also apply within the mat and when installed.

**length + width:**

+/- 1.5 % (DIN ISO 3302-1 tolerance class M4)