

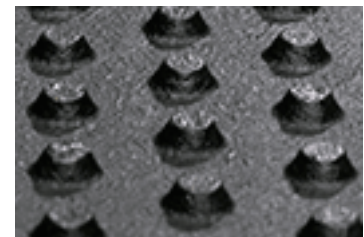
## KURA S



Your KRAIBURG dealer:



grip-surface: supports sure footing



stud profile for ideal softness



fastening system: patented rubber peg to prevent lateral slipping - flush with the mat

**The benchmark for excellent walking comfort since more than 15 years for every slatted floor geometry**

**also for young cattle up to 250 kg animal weight (or up to 350 kg, if the animals are kept in the same pen for the whole breeding period)**

- **individually tailor-made**  
the mats are generally dimensioned according to the guidelines established by our specialists. The slatted floor must be suited for covering with KRAIBURG mats\*
- dimensional stability and long durability through large-scale mats extending over several slatted floor elements
- enhances animal health, productivity and longevity
- improves slip resistance
- suitable for both new construction and renovation
- easy-to-handle single mats for simple installation
- extremely sturdy fastening system
- compatible with use of manure scraper, robot scraper and wheeled traffic\*

### Dimensions:

**thickness:** 24 mm

**width x length:** tailor-made

### Prerequisites for slatted floors:

- **slit width:** starting at 24 mm  
(young cattle / calves in pens: Slit widths starting at 30 mm are recommended to keep the animals satisfactorily clean.)
- **slat width within concrete elements:** starting at 80 mm

### Accessory:

**pediKURA® »** - soft flooring with abrasion zones

### Installation:

easy and fast installation with corresponding, patented rubber pegs\*

\* Please take notice of the corresponding KRAIBURG specifications and installation instructions with useful advice and tips.

>The products presented here should only be used for the mentioned applications. Technical

**Gummiwerk KRAIBURG Elastik GmbH & Co. KG**

Göllstraße 8 • 84529 Tittmoning • Deutschland • Tel.: +49 8683 701-303 • Fax: +49 8683 701-190 • E-Mail: info@kraiburg-elastik.de • www.kraiburg-elastik.de

October 2018

specifications are subject to alterations. All sales are subject to our General Terms and Conditions.  
Legal basis is the German version of the document.

**Tolerances:**

**thickness:**

+3/-2 mm

The tolerances also apply within the mat and when installed.

**length + width:**

+/- 1.5 % (DIN ISO 3302-1 tolerance class M4)