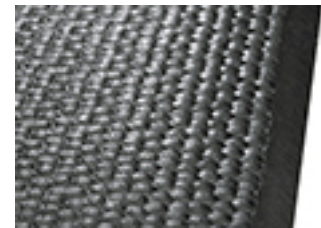
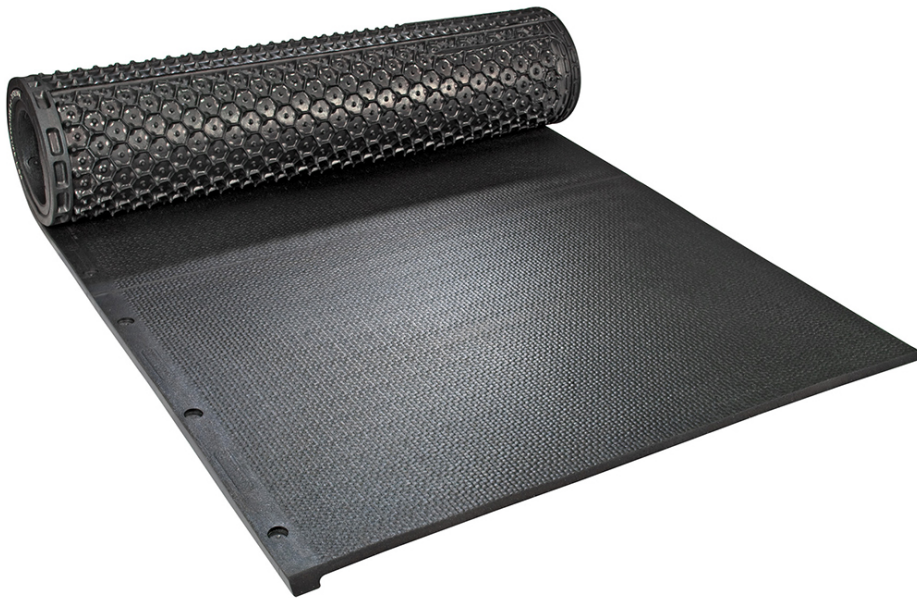


Your KRAIBURG dealer:

 pebbled surface
 chamfer at rear edge


honeycomb texture with sealing lips



KKM LongLine in practice

The cosy mat classic as continuous system

- continuous system with proven qualities of KKM single mat
- the highly wear resistant honeycomb texture creates excellent and permanent lying comfort
- installation independent of divider arrangement
- fixation only at the front edge - fast installation
- integrated slope in the rear edge promotes drying off
- chamfer on the rear edge: gentle on animal joints, no stumbling edges
- sealing lips in the rear edge of the lower side minimize soiling

Dimensions:
thickness: 30 mm

length x width:

2.5 - 50 m (in 10 cm-steps) x 170/183/200 cm

Installation:

only at the front edge 2-3 fixings / lying place*

Accessories:

- **KK-Poly-T-Bar** for closure at side edges, length: 120/165/180 cm, installation: 4-5 screws / profile
- **ergoBOARD »** - the flexible brisket board
- **maxiBOARD »** - the robust brisket board

* Please take notice of the corresponding KRAIBURG specifications and installation instructions with useful advice and tips.

>The products presented here should only be used for the mentioned applications. Technical specifications are subject to alterations. All sales are subject to our General Terms and Conditions. Legal basis is the German version of the document.

Tolerances:
thickness:

+3/-2 mm

The tolerances also apply within the mat and when installed.

length + width:

+/- 1.5 % (DIN ISO 3302-1 tolerance class M4)