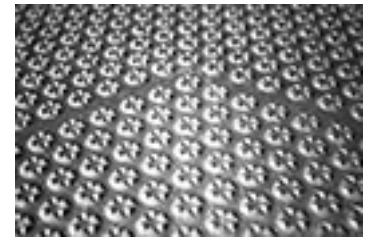
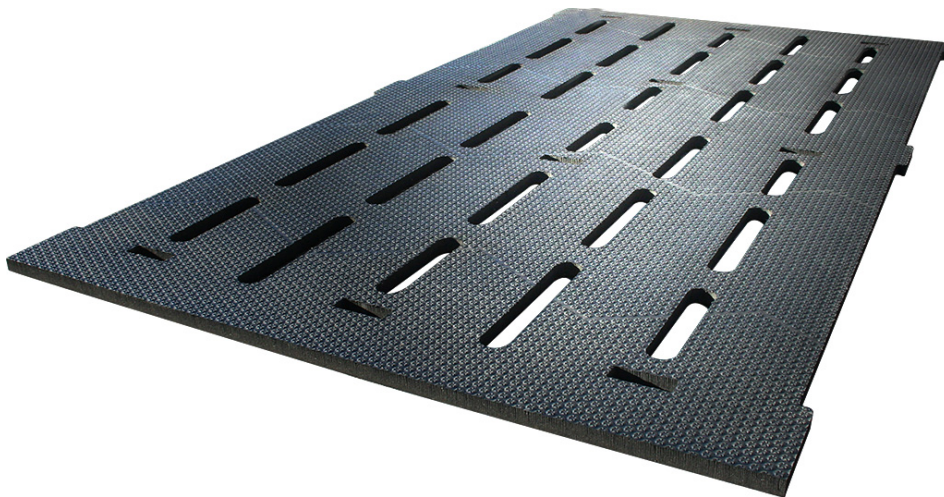
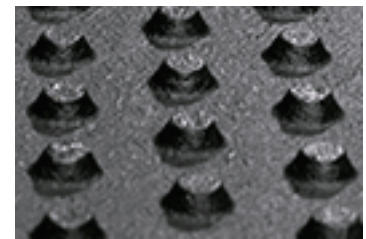


profiKURA S

Your KRAIBURG dealer:



optiGrip-surface



stud profile for ideal softness



fastening system: patented rubber peg to prevent lateral slipping - flush with the mat

animal-friendly softness, improved grip and even claw abrasion on all walking areas in the cattle house:

- optiGrip-surface with incorporated abrasive corundum and star-shaped profiling
 - » high slip resistance
 - » contributes to correct claw form through even abrasion on all walking areas in the cattle house
- improved walking comfort
 - » supports claw health and mobility
 - » promotes feed intake and high yield
- **tailor-made for every slatted floor geometry**
the mats are generally dimensioned according to the guidelines established by our specialists. The slatted floor must be suited for covering with KRAIBURG mats*
- dimensional stability and long durability through large-scale mats extending over several slatted floor elements
- suitable for both new construction and renovation
- easy-to-handle single mats for simple installation
- extremely sturdy fastening system
- compatible with use of manure scraper, robot scraper and wheeled traffic*

About corundum:

- the **second hardest mineral** after diamonds
- does not react with acids and bases: best precondition for use in slurry environments
- patented technology which has been well-proven in the KRAIBURG-group for many years

Installation:

The **full benefits** from using this product (slip resistance + optimal claw abrasion) are realised with **full coverage in all walking areas** in the cattle house

> balanced content of abrasive agent in the surface

Dimensions:

thickness: 24 mm

width x length: tailor-made

Prerequisites for slatted floors:

slit width: starting at 24 mm

slat width within concrete elements: starting at 80 mm

Installation:

Gummiwerk KRAIBURG Elastik GmbH & Co. KG

Göllstraße 8 • 84529 Tittmoning • Deutschland • Tel.: +49 8683 701-303 • Fax: +49 8683 701-190 • E-Mail: info@kraiburg-elastik.de • www.kraiburg-elastik.de

easy and fast installation with corresponding, patented rubber pegs*

* Please take notice of the corresponding KRAIBURG specifications and installation instructions with useful advice and tips.

>The products presented here should only be used for the mentioned applications. Technical specifications are subject to alterations. All sales are subject to our General Terms and Conditions. Legal basis is the German version of the document.

Tolerances:

thickness:

+3/-2 mm

The tolerances also apply within the mat and when installed.

length + width:

+/- 1.5 % (DIN ISO 3302-1 tolerance class M4)